



GAT MONTHLY MEMBERSHIP PROGRESS REPORT

Results as of: 5/31/2023

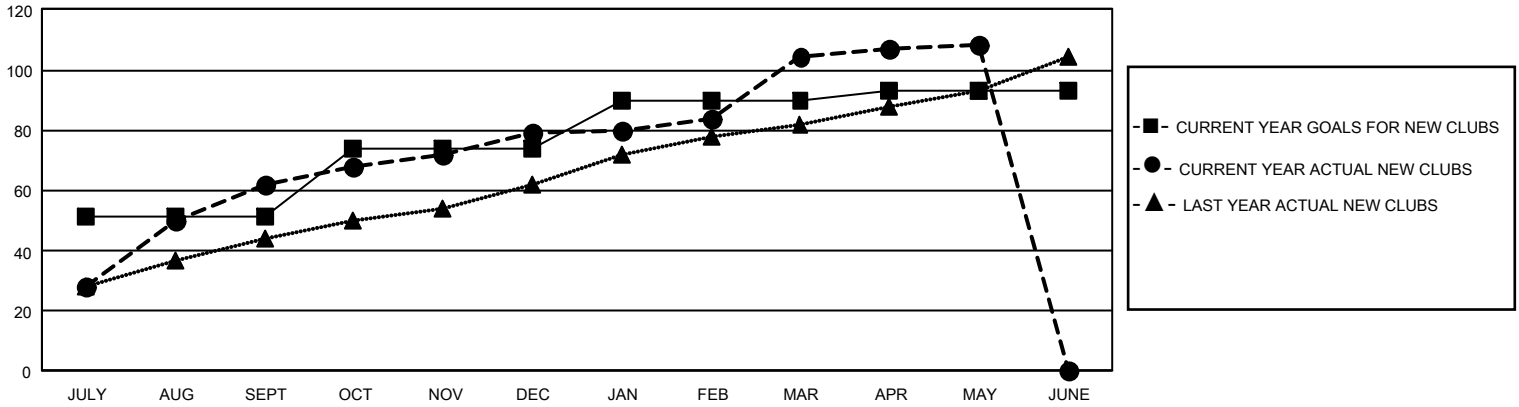
GMT Constitutional Area 6, Group I

REPORT DOES NOT INCLUDE CLUBS IN UNDISTRICTED AREAS.

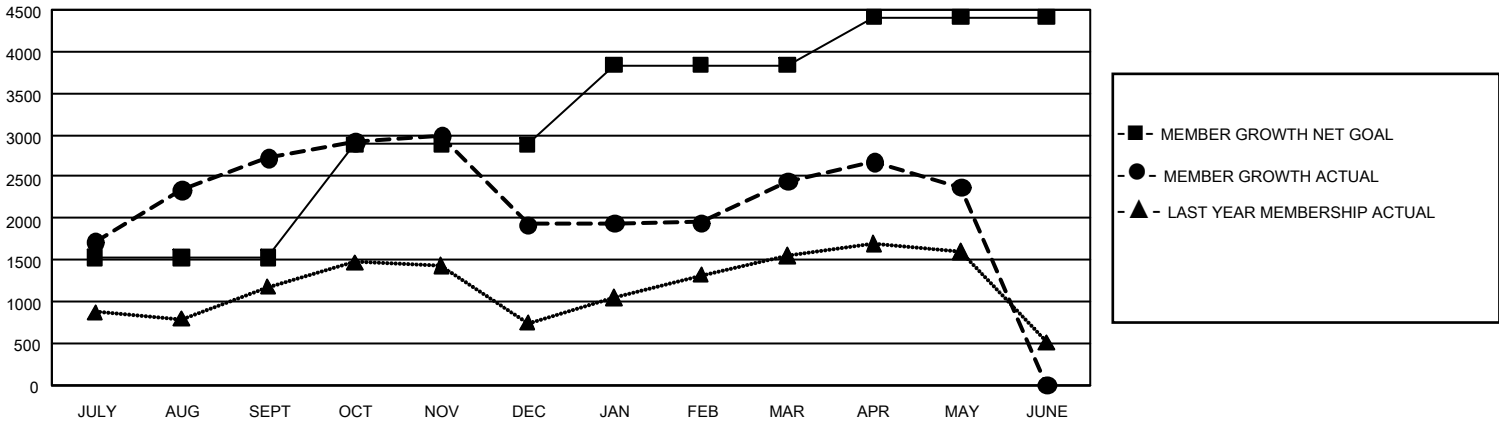
Clubs			
RESULTS FOR 2022-2023			
QUARTER	NEW CLUB GOAL	NEW CLUBS	DROPPED CLUBS
JULY/AUG/SEPT	153	62	15
OCT/NOV/DEC	69	17	43
JAN/FEB/MAR	48	25	23
APR/MAY/JUNE	9	4	3

Members			
RESULTS FOR 2022-2023			
QUARTER	MEMBER GROWTH NET GOAL	MEMBER GROWTH ACTUAL	DROPPED MEMBERS ACTUAL (including transfers)
JULY/AUG/SEPT	1523	3,594	731
OCT/NOV/DEC	1363	1,537	2,231
JAN/FEB/MAR	953	1,395	671
APR/MAY/JUNE	575	684	682

GOALS AND ACTUAL NEW CLUBS CUMULATIVE



GOALS AND ACTUAL MEMBERS CUMULATIVE



DROPPED CLUBS: 84	749 CLUBS OF 1,154 ADDED 1 OR MORE NEW MEMBERS	GENDER DISTRIBUTION	
		MALE 26,997 (67.93%) FEMALE 12,732 (32.04%) NON BINARY 0 (0.00%) PREFER NOT TO ANSWER 11 (0.03%)	
DROPPED MEMBERS		CLICK HERE FOR CUMULATIVE MEMBERSHIP DATA	TOTAL FAMILY UNIT MEMBERS 21,600
DECEASED 111 CLUB CANCELLED 1,237 OTHER 2,967 TOTAL 4,315			FAMILY MEMBERS PAYING HALF DUES 13,337